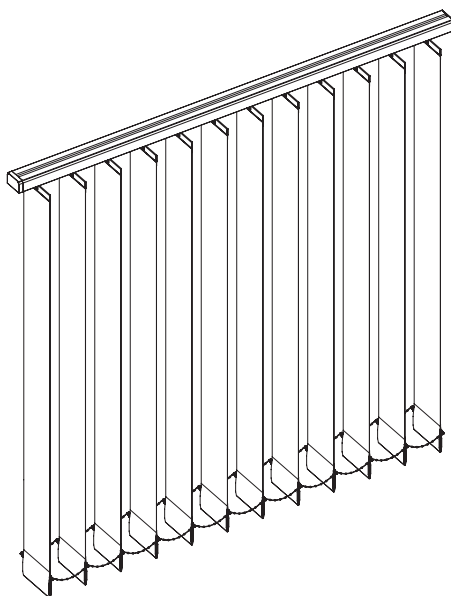


Montage-instructie

Lamelgordijn
Basismodel



Belangrijk vóór het monteren

Waarschuwing

Als u het product zelf monteert, is dat voor uw eigen risico. Gebruik deze instructie slechts als een hulpmiddel en alleen bij montage van dit specifieke product. Mocht u er zelf niet uitkomen, dan kunt u altijd kiezen voor professionele montage.

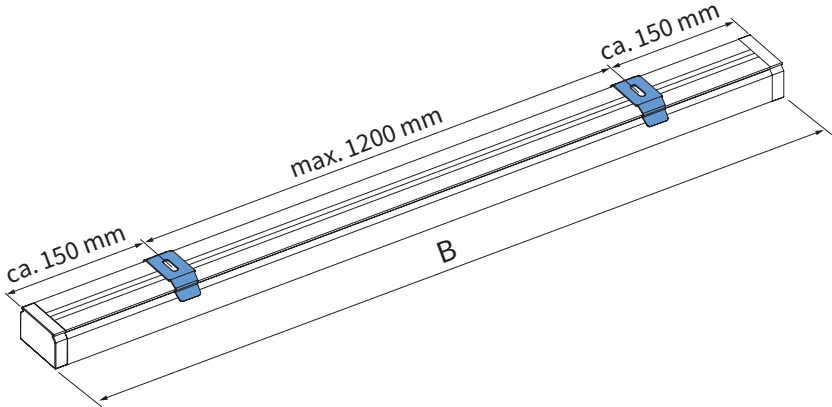
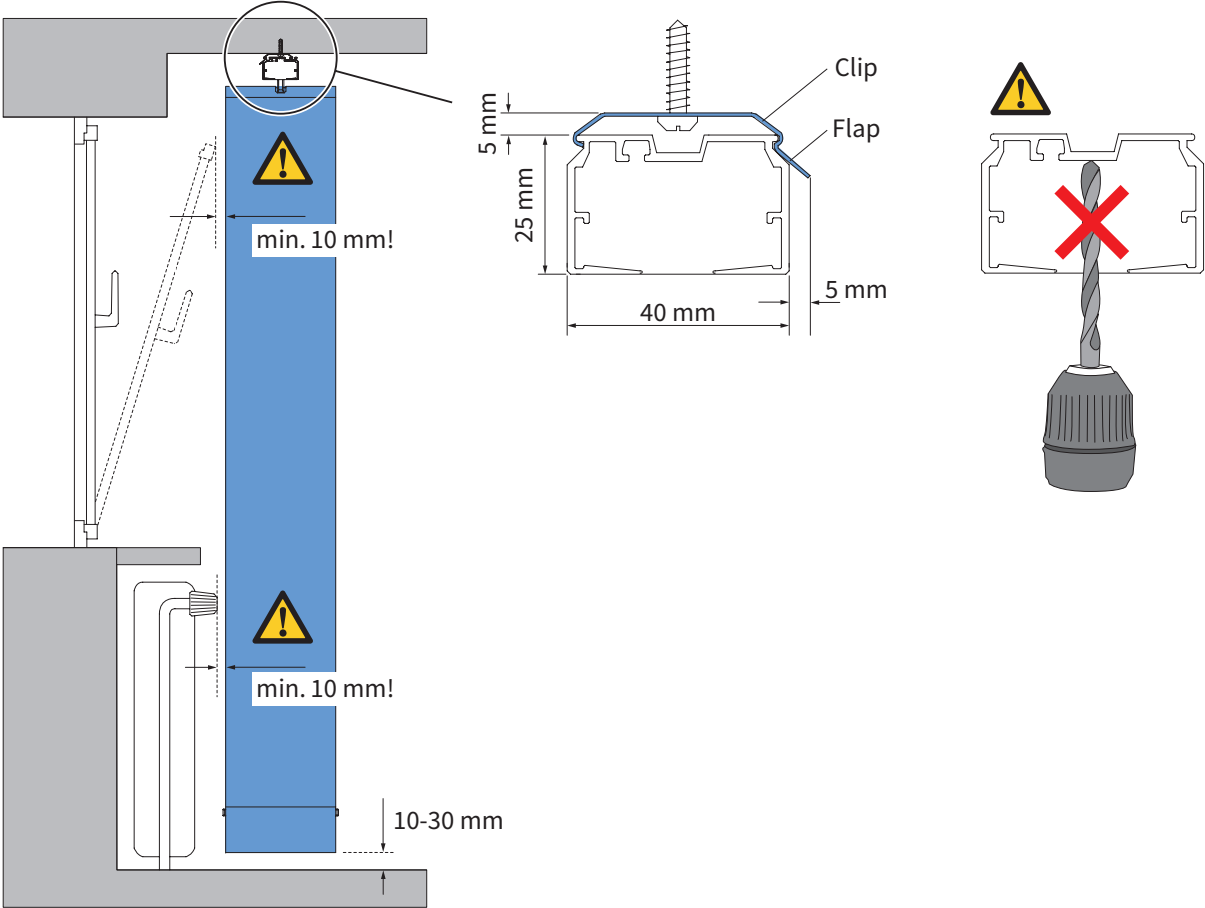
Pas op voor beschadigingen! Gebruik geen mes of ander scherp voorwerp bij het openen van de verpakking. De inhoud zou beschadigd kunnen raken. Leg de inhoud op een zachte ondergrond.

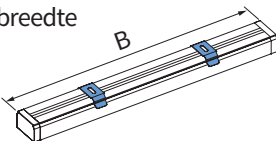
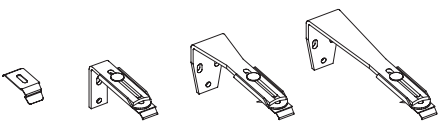
Pas op wanneer u gaat boren. Vallend boorgruis kan beschadigingen veroorzaken.

Controleer of het kozijn of de gevel vlak is

Schroeven voor de bevestiging zijn niet bijgesloten. Gebruik altijd schroeven en pluggen welke geschikt zijn voor de wand of het plafond waarop het lamelgordijn gemonteerd wordt!

Montage



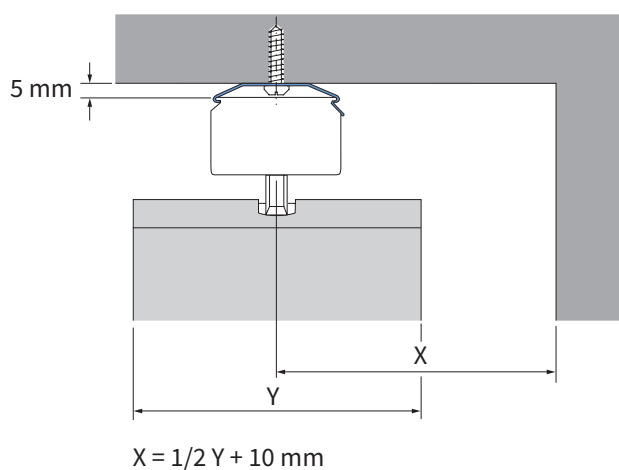
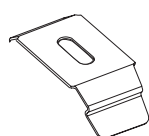
B = totale breedte 	0 - 1500 mm	1501 - 2700 mm	2701 - 3900 mm	3901 - 5100 mm	5101 - 6300 mm	6301 - 7000 mm
	2	3	4	5	6	7

Montage



A

Plafondmontage m.b.v. clip

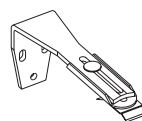


B

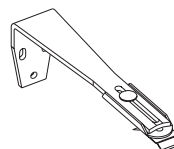
Wandmontage m.b.v. afstandsteun



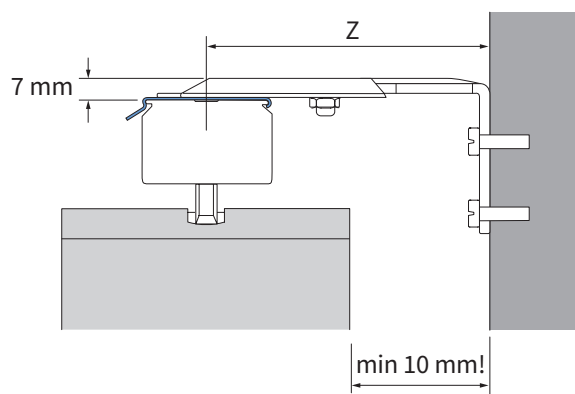
Z = 60 - 108 mm



Z = 108 - 156 mm

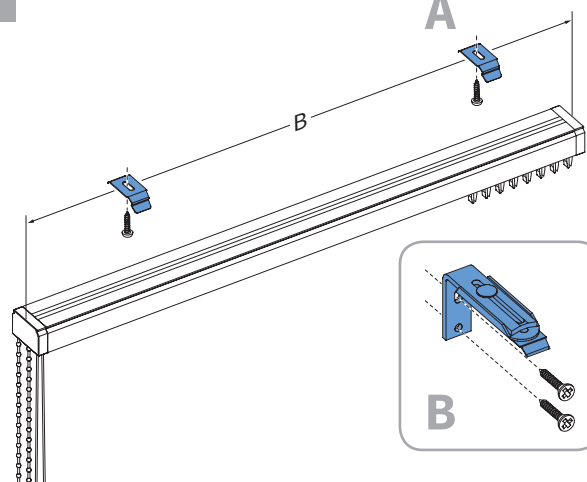


Z = 156 - 204 mm

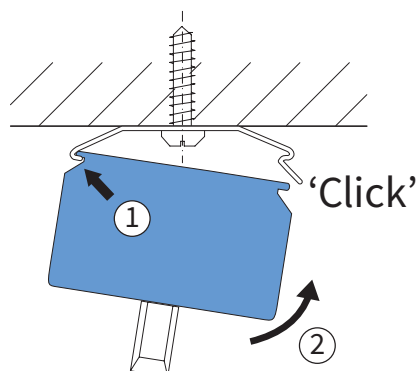


1

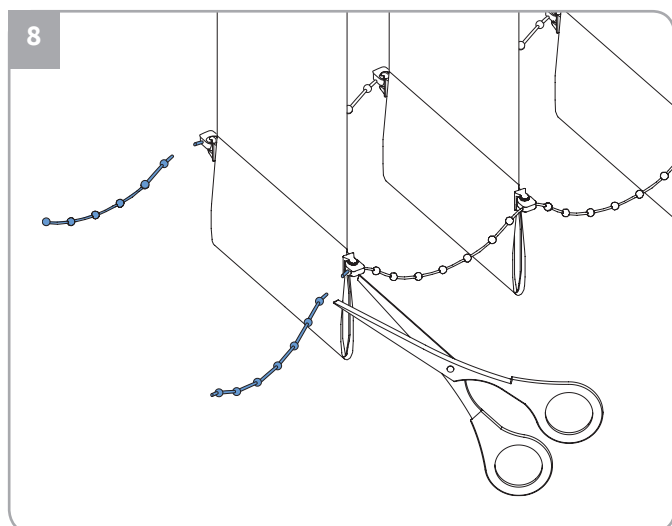
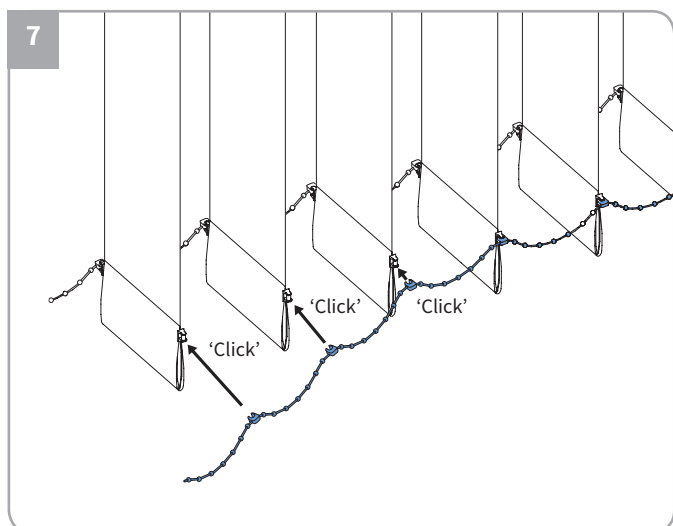
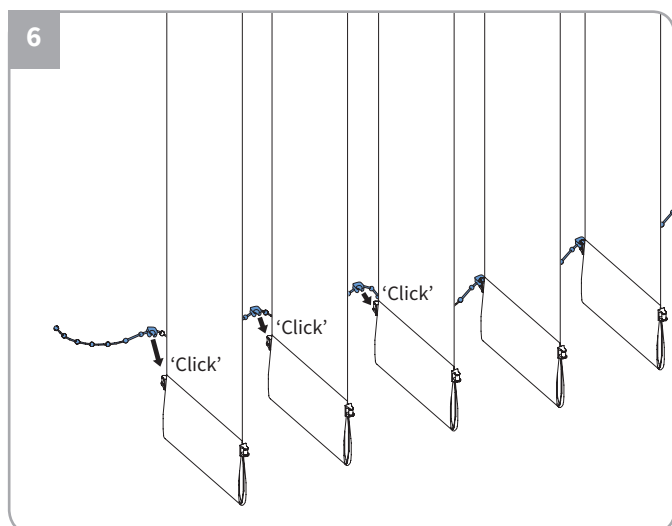
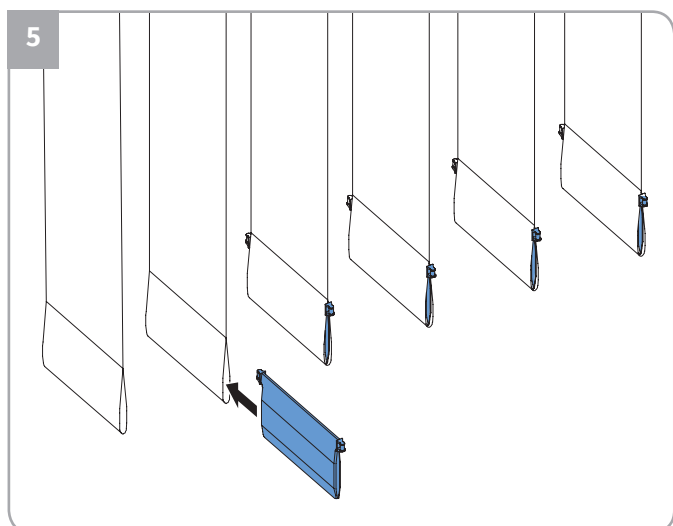
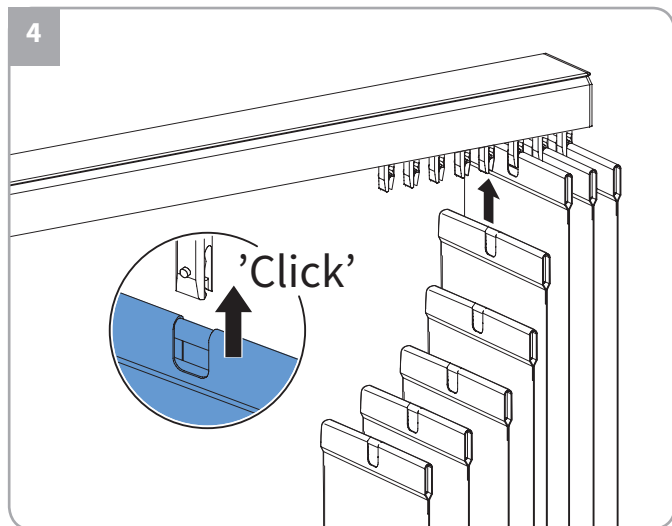
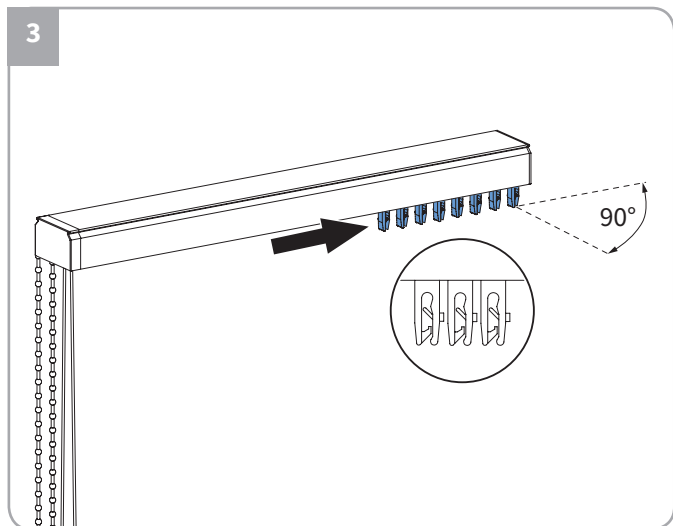
A



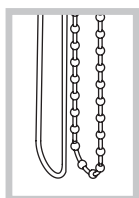
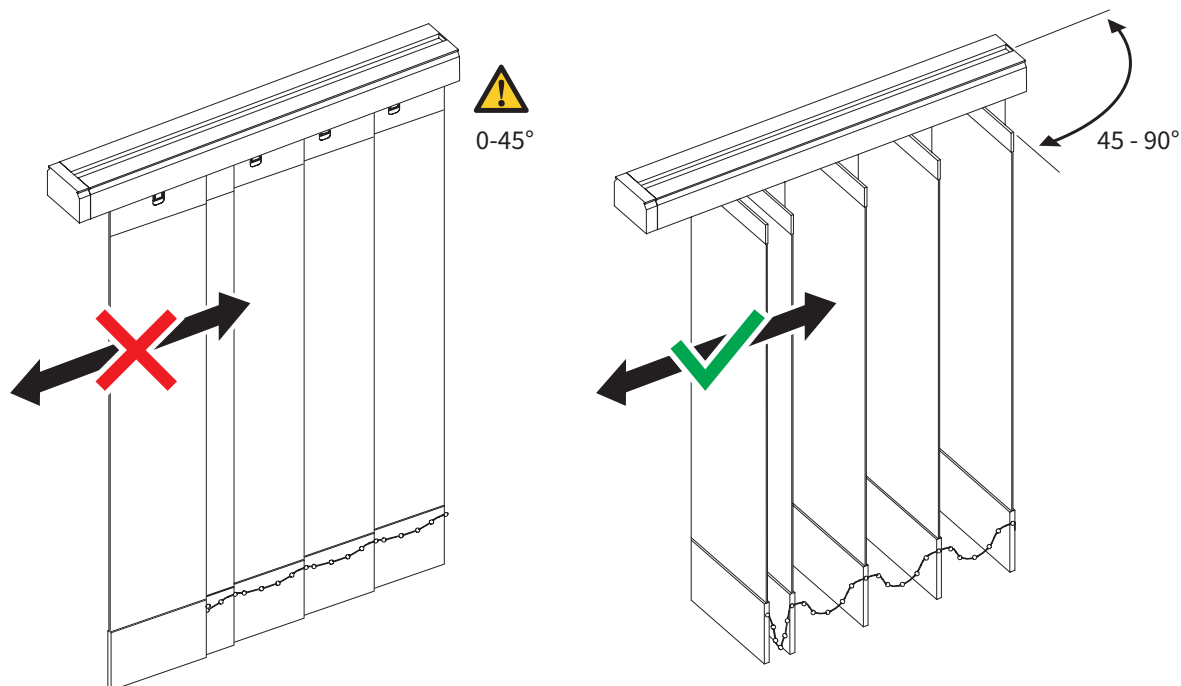
2




Montage

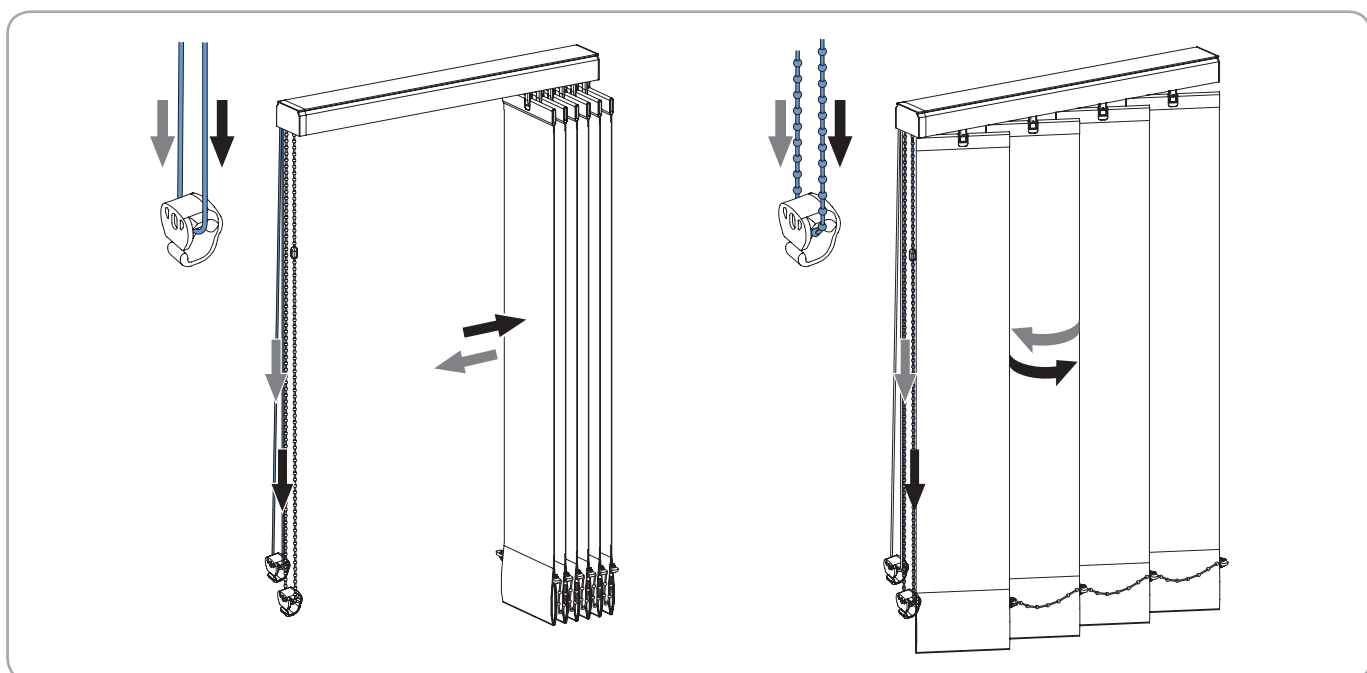


Bediening

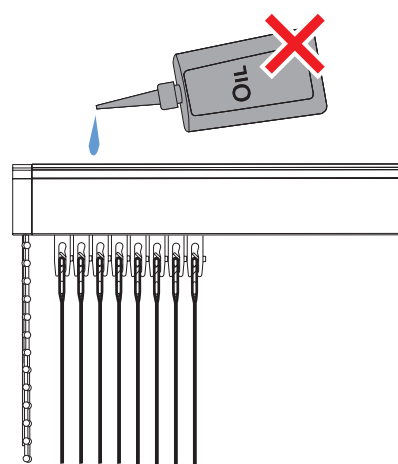
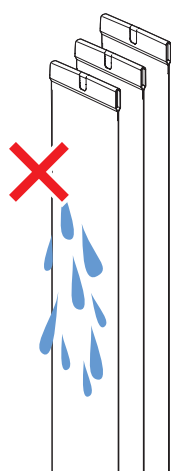
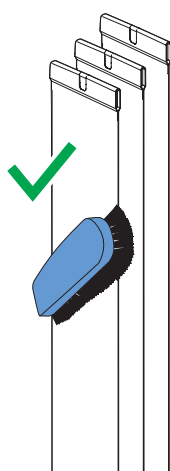
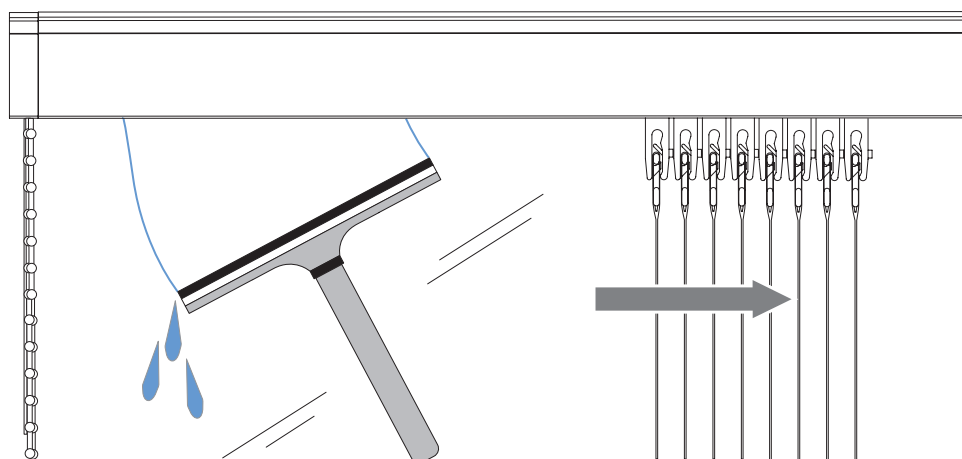
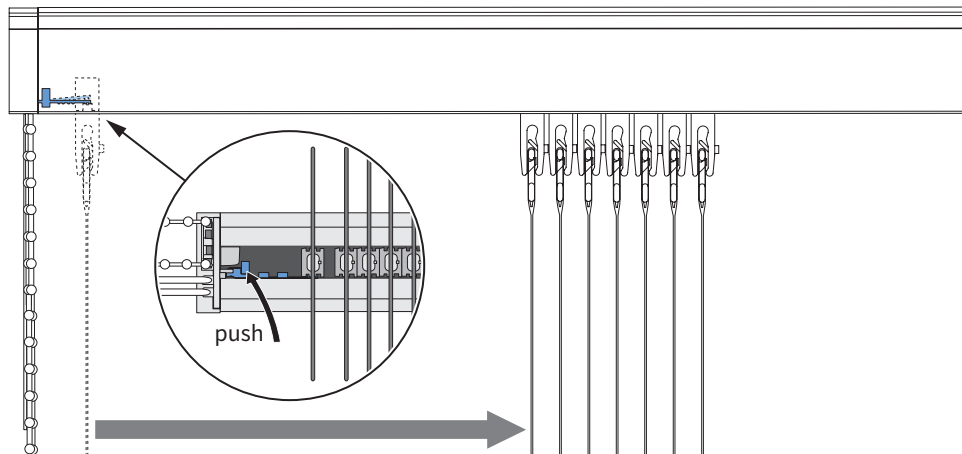


Ketting- en koordbediening

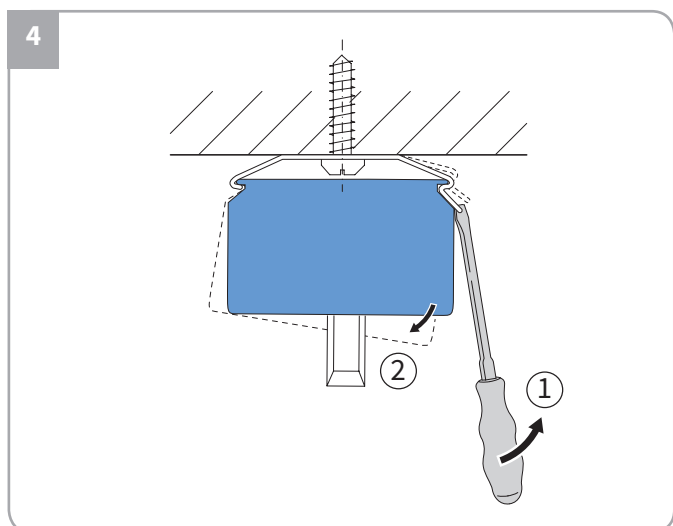
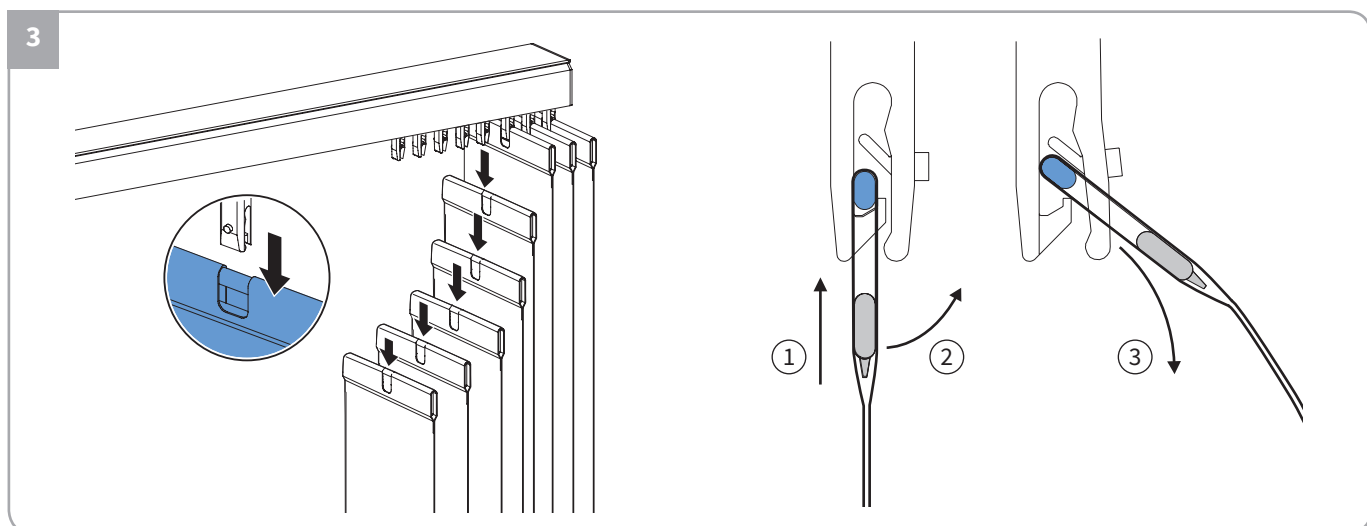
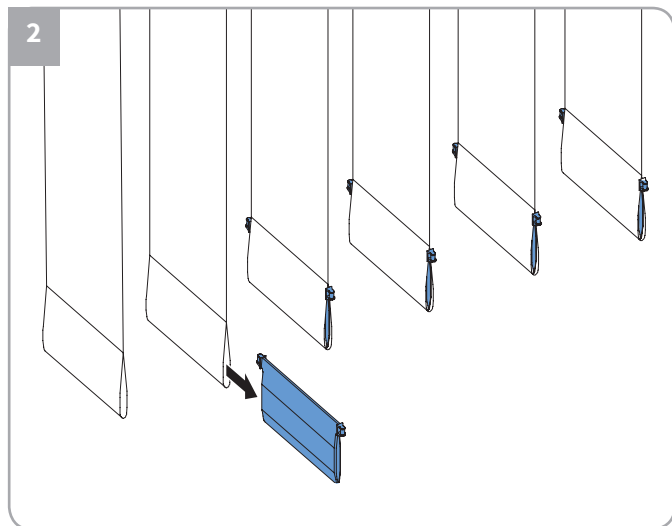
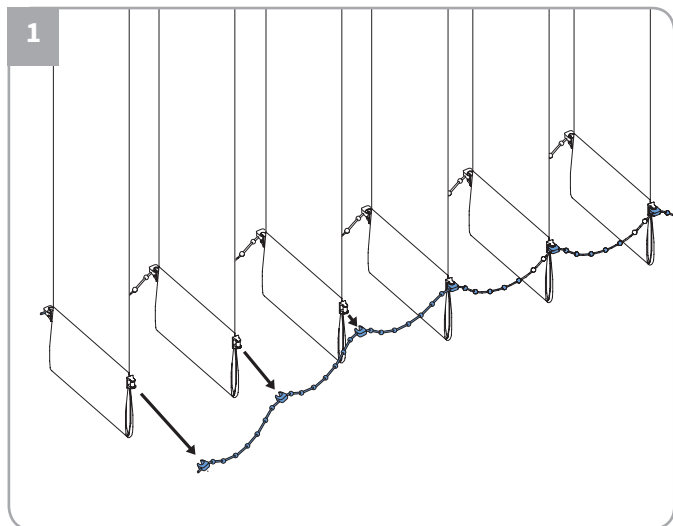
 Zie pagina 10 'Kindveiligheid'



Onderhoud

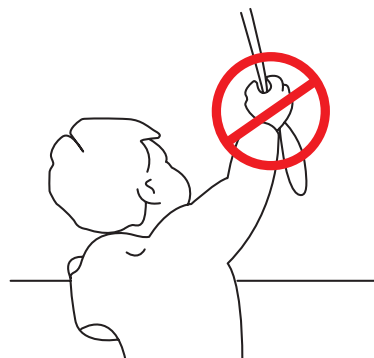
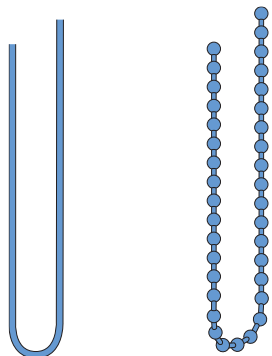


Demontage

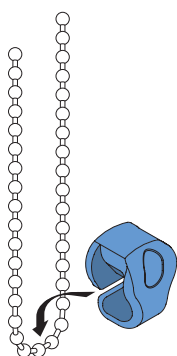


Kindveiligheid - Koord/kettingbediening

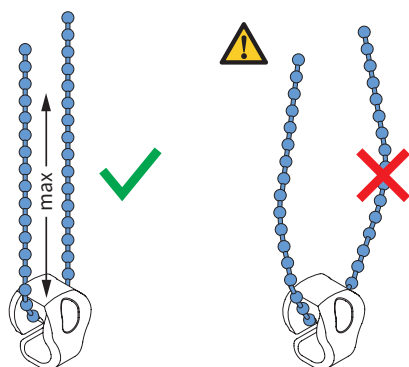
1



2



3



4

